

FEATURES :

- 15 Watt Package
- 2:1Wide Input Voltage
- 100% Burned In
- High Efficiency to 86%
- Customized Solutions Available
- Remote Control: On/Off
- UL94V-0 Package Material
- Operating Temperature:-40°C to +85°C
- 3 Years Warranty

Specifications typical at TA=25°C, nominal input voltage and rated output current unless otherwise specified

| Part Number | Input Voltage | Input Current (mA TYP) | | Output Voltage | Output Current | Efficiency | Capacitor Load |
|-------------|---------------|------------------------|-----------|----------------|----------------|------------|----------------|
| | Vdc | No-Load | Full Load | Vdc | Full Load (mA) | %TYP | uF MAX |
| 67D-12S03R3 | 9-18 | 70 | 1310 | 3.3 | 4000 | 84 | 1500 |
| 67D-12S05R3 | 9-18 | 70 | 1453 | 5 | 3000 | 86 | 1500 |
| 67D-12S12R3 | 9-18 | 30 | 1453 | 12 | 1250 | 86 | 120 |
| 67D-12S15R3 | 9-18 | 30 | 1453 | 15 | 1000 | 86 | 120 |
| 67D-12D05R3 | 9-18 | 70 | 1488 | ±5 | ±1500 | 84 | ±1000 |
| 67D-12D12R3 | 9-18 | 30 | 1454 | ±12 | ±625 | 86 | ±120 |
| 67D-12D15R3 | 9-18 | 30 | 1454 | ±15 | ±500 | 86 | ±120 |
| 67D-24S03R3 | 18-36 | 70 | 655 | 3.3 | 4000 | 84 | 3300 |
| 67D-24S05R3 | 18-36 | 70 | 727 | 5 | 3000 | 86 | 3300 |
| 67D-24S12R3 | 18-36 | 30 | 727 | 12 | 1250 | 86 | 330 |
| 67D-24S15R3 | 18-36 | 30 | 727 | 15 | 1000 | 86 | 330 |
| 67D-24D05R3 | 18-36 | 70 | 744 | ±5 | ±1500 | 84 | ±2000 |
| 67D-24D12R3 | 18-36 | 30 | 727 | ±12 | ±625 | 86 | ±330 |
| 67D-24D15R3 | 18-36 | 30 | 727 | ±15 | ±500 | 86 | ±330 |
| 67D-48S03R3 | 36-75 | 40 | 327 | 3.3 | 4000 | 84 | 5600 |
| 67D-48S05R3 | 36-75 | 40 | 363 | 5 | 3000 | 86 | 5600 |
| 67D-48S12R3 | 36-75 | 30 | 363 | 12 | 1250 | 86 | 680 |
| 67D-48S15R3 | 36-75 | 30 | 363 | 15 | 1000 | 86 | 680 |
| 67D-48D05R3 | 36-75 | 40 | 372 | ±5 | ±1500 | 84 | ±3300 |
| 67D-48D12R3 | 36-75 | 30 | 368 | ±12 | ±625 | 85 | ±220 |
| 67D-48D15R3 | 36-75 | 30 | 368 | ±15 | ±500 | 85 | ±220 |

Input Specifications

| Parameters | Conditions | Min | Typ | Max | Units |
|---------------|------------|-----|-----|-----|-------|
| Voltage Types | | | | 2:1 | |
| Filter | Pi TYPE | | | | |

YUAN DEAN SCIENTIFIC



DC-DC Converter

67D-R3 SERIES

15Watt 1.5KV Isolated

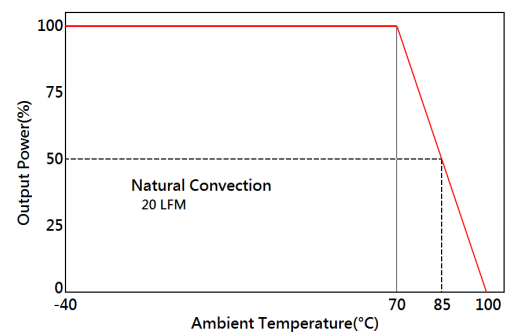
2 : 1 Input Voltage Range

Single & Dual Output

2" x 1"



Temperature Derating Graph



www.yds.com.tw



TEL : 886-6-3842899 FAX : 886-6-3843288
E-MAIL : ydsweb@yds.com.tw

Rev: 0 2018/10/31

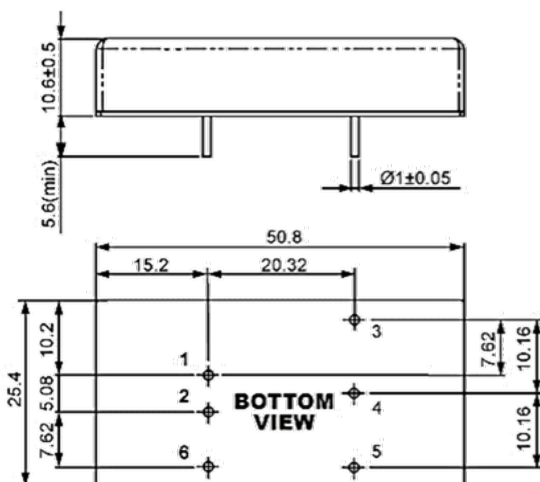
Output Specifications

| Parameters | Conditions | Min | Typ | Max | Units |
|---------------------------------|--------------------------------------|-----|-----|------------|-------|
| Voltage Tolerance | Full load @Vin(nom.) | | | ±2 | % |
| Short Circuit Protection | Hiccup, automatic recovery | | | | |
| Line Regulation | | | | ±0.5 | % |
| Load Regulation | Single | | | ±0.5 | % |
| | Dual (Balance Load) | | | ±1.0 | % |
| Cross Regulation | DUAL (25% to 100% Load) | | | ±5 | % |
| Ripple & Noise | Output:3-15V TYPES BW=DC To 20MHz | | | 100 | mVp-p |
| | Output > 15V TYPES BW=DC To 20MHz | | | 1% of Vout | mVp-p |
| Transient response setting time | 25% load step change | | 300 | | us |

General Specifications

| Parameters | Conditions | Min | Typ | Max | Units |
|-----------------------|--|-----------------------|------|-----|-------|
| Isolation Voltage | | | 1500 | | Vdc |
| Isolation Resistance | 500Vdc | 1000 | | | MΩ |
| Switching Frequency | | | 300 | | KHz |
| Operating Temperature | With derating | -40 | | 85 | °C |
| Storage Temperature | | -55 | | 125 | °C |
| Humidity | Non Condensing | 5 | | 95 | % |
| Cooling | Natural Convection (20LFM) | | | | |
| Case material | Nickel coated copper with no-conductive base | | | | |
| MTBF | MIL-HDBK-217F@25°C | 2.318x10 ⁶ | | | Hours |
| Weight | | | 32.6 | | g |
| Dimensions | | 50.8x25.4x10.6 | | | mm |

Dimensions



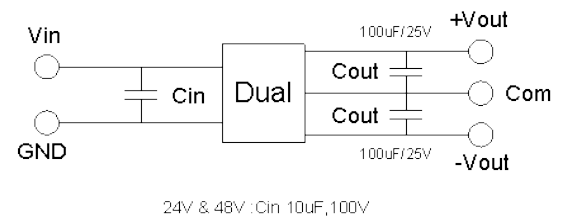
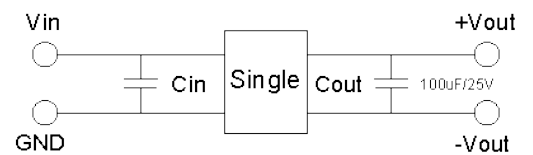
UNIT : mm
Tolerances : XX.X ±0.5, XX.XX±0.25

Part Number

67D - 12 S 03 R 3
A B C D E F

- A: Series
- B: Input Voltage
- C: Single Output(S), Dual (D)
- D: Output Voltage
- E: Regulated(R)
- F: Package

Recommended Test Circuit



PIN Assignment

| Pin | 1 | 2 | 3 | 4 | 5 | 6 |
|--------|------|------|-------|------|-------|---------------|
| Single | +Vin | -Vin | +Vout | Trim | -Vout | Remote On/Off |
| Dual | +Vin | -Vin | +Vout | Com | -Vout | Remote On/Off |