

FEATURES :

- 10 Watt Package
- 4:1Wide Input Voltage
- 100% Burned In
- High Efficiency to 85%
- Customized Solutions Available
- UL94V-0 Package Material
- Operating Temperature:-40°C to +87°C
- 3 Years Warranty

Specifications typical at TA=25°C, nominal input voltage and rated output current unless otherwise specified

Part Number	Input Voltage		Input Current (mA TYP)		Output Voltage		Output Current	Efficiency	Capacitor Load
	Vdc	No-Load	Full Load	Vdc	Full Load (mA)	%TYP	uF TYP		
61DW-24S05RNL	9-36	25	508	5	2000	82	3300		
61DW-24S09RNL	9-36	25	502	9	1111	83	680		
61DW-24S12RNL	9-36	25	490	12	833	85	680		
61DW-24S15RNL	9-36	25	490	15	666	85	470		
61DW-24D05RNL	9-36	25	508	±5	±1000	82	±2200		
61DW-24D09RNL	9-36	25	502	±9	±555	83	±470		
61DW-24D12RNL	9-36	25	490	±12	±416	85	±470		
61DW-24D15RNL	9-36	25	490	±15	±333	85	±330		
61DW-48S05RNL	18-72	20	254	5	2000	82	1000		
61DW-48S09RNL	18-72	20	251	9	1111	83	680		
61DW-48S12RNL	18-72	20	245	12	833	85	680		
61DW-48S15RNL	18-72	20	245	15	666	85	470		
61DW-48D05RNL	18-72	20	254	±5	±1000	82	±2200		
61DW-48D09RNL	18-72	20	251	±9	±555	83	±470		
61DW-48D12RNL	18-72	20	245	±12	±416	85	±470		
61DW-48D15RNL	18-72	20	245	±15	±333	85	±330		

Input Specifications

Parameters	Conditions	Min	Typ	Max	Units
Voltage Types				4:1	
Filter	Pi TYPE				

Output Specifications

Parameters	Conditions	Min	Typ	Max	Units
Voltage Tolerance	Full load @Vin(nom.)			±2	%
Short Circuit Protection	Hiccup, automatic recovery				
Line Regulation				±0.5	%
Load Regulation	Single (25% to 100%)			±0.5	%
Load Regulation	Dual (25% to 100%, Balance Load)			±2.0	%
Cross Regulation	DUAL (25% to 100%)			±5.0	%
Ripple & Noise	BW=DC To 20MHz			100	mVp-p
Transient response setting time	25% load step change		350		us



DC-DC Converter
61DW SERIES

10Watt 1.5KV Isolated

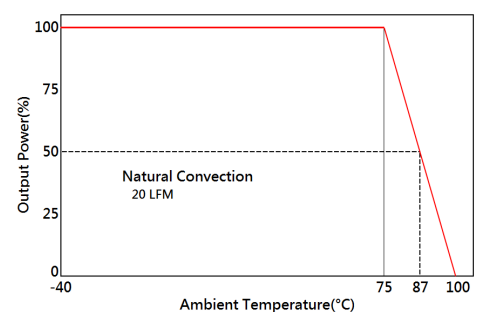
4 : 1 Input Voltage Range

Single & Dual Output

2" x 1"



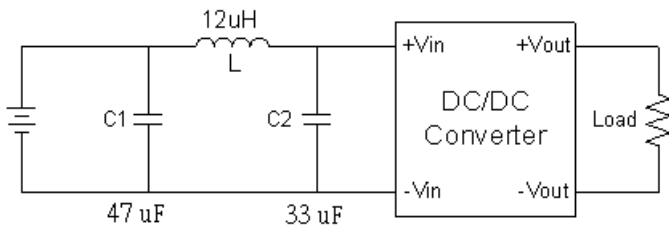
Temperature Derating Graph



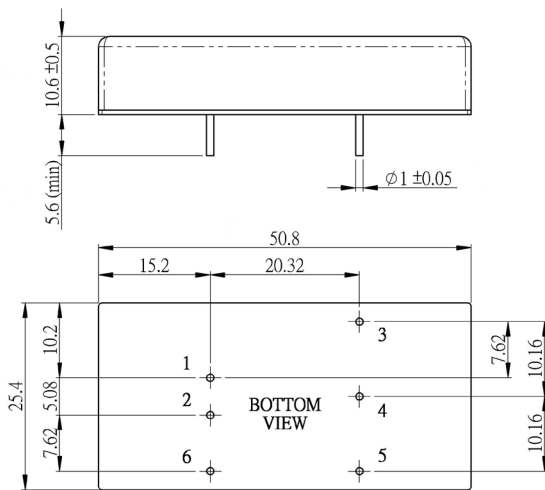
General Specifications

Parameters	Conditions	Min	Typ	Max	Units
Isolation Resistance	500Vdc	1000			MΩ
Switching Frequency			300		KHz
Operating Temperature	With derating	-40		87	°C
Humidity	Non Condensing			95	%
Cooling	Natural Convection (20LFM)				
Case material	Nickel Coated with Non-Conductive Base				
Weight			36.5		g
Dimensions			50.8x25.4x10.6		mm
Potting Material	Epoxy (UL94V-0 rated)				

Suggest adding input external filter(C1,C2,L)to meet conducted emissions(EN55022 class A)



Dimensions

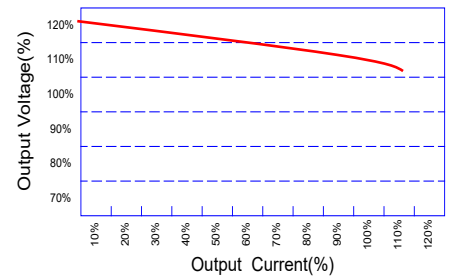


Unit : mm
Tolerance : XX.X ± 0.5 , XX.XX ± 0.25

PIN Connection

Pin	1	2	3	4	5	6
Single	+Vin	-Vin	+Vout	NO PIN	-Vout	NO PIN
Dual	+Vin	-Vin	+Vout	COM	-Vout	NO PIN

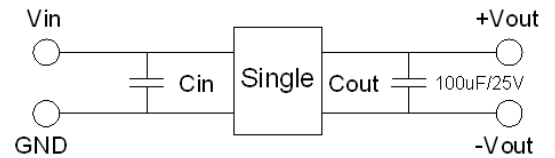
Tolerance Envelope Graph



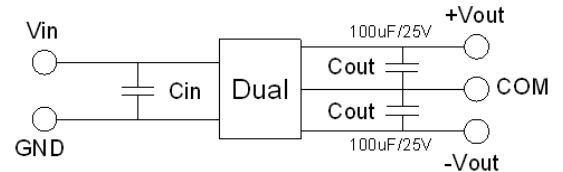
Part Number

61DW - 24 S 05 R NL
 A B C D E F
 A:Series
 B:Input Voltage
 C:Single(S)Dual(D)
 D:Output Voltage
 E:Regulated(R)
 F:RoHS Version

Recommended Test Circuit

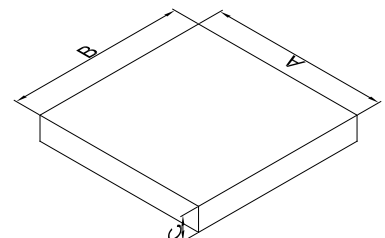


24V & 48V: Cin 10uF,100V



24V & 48V: Cin 10uF,100V

Packaging



Size(mm)		
A	B	C
210.00	210.00	30.00

